

SmartLF Ci 40

INNOVATION IN WIDE FORMAT SCANNERS AND SOFTWARE



Sharp, Accurate Production Scanner

IDEAL FOR:
ARCHITECTS, ENGINEERS, CONSTRUCTION, GIS,
BUILDING SERVICES, FACILITIES MANAGEMENT,
TECHNICAL & CAD DRAWING OFFICES

Awarded 4 1/2 stars by BERTL, the SmartLF Ci 40 is a fast, accurate and affordable 40" technical document scanner offering easy, face-up, instant-on, walk-up scanning and copying to any workstation or printer across a network.

NEW IMPROVED MODEL

Capturing wide format technical documents in bulk just got easier. New improvements to the best-selling Colortrac SmartLF Ci 40 makes everyday batch scanning tasks now more efficient, more productive.



Key Features

SHARP, ACCURATE PRODUCTION SCANNER

- ◆ 600dpi optical with 9600dpi maximum resolution
- ◆ 40" image width - perfect for scanning A0/E-size documents
- ◆ **NEW** Magnetic document guide for easier, more productive loading
- ◆ **NEW** professional MFP stand for scan-to-copy workstation
- ◆ **NEW** Includes SmartWorks EZ SCAN/COPY/EMAIL software
- ◆ Sharp, fine image detail - superb black & white capture
- ◆ CIS¹ technology with extra long-life, instant-on, longlife bi-directional LED² illumination
- ◆ Convenient front document exit for easy retrieval
- ◆ High speed scans in monochrome, grayscale and color
- ◆ Scans media up to 0.012" (0.3mm) - suits ALL technical documents
- ◆ On-site upgrade from monochrome to color and express color
- ◆ Fast, high quality scans from power-on, no warm-up, no waiting!
- ◆ Compact, space saving design with low power consumption
- ◆ Low maintenance costs, plug and play USB2 connectivity
- ◆ Unique ISIS certified wide format EDM document capture
- ◆ ENERGY STAR[®] qualified - powers down when idle

The SmartLF Ci 40 walk-up scanner offers professional A0 or Architectural E-size scan and print productivity at the touch of a button. Supplied with SmartWorks EZ monochrome, grayscale or color scan and copy software, you can quickly and easily scan to file, email (PDF) or any printer. Its high definition optical resolution will capture the finest details of all your technical drawings and maps with an unrivalled combination of sharpness, accuracy and bright colors.



CAD and Technical Drawings



Image Enhancement

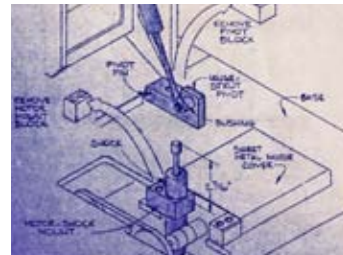


Image Restoration



Archived Blueprints

Because you need large format scanning solutions that work for you:

Available in three affordable and uniquely upgradeable models, you can start with a monochrome solution and upgrade to a choice of two color scanners if necessary.

The Ci 40 includes straightforward SmartWorks EZ SCAN/COPY/EMAIL software which runs in either text/keyboards/mouse or touch-screen* modes - switch between them!

It also Combines wide format scanning and copying in one very easy to use program and has full compatibility with wide format printers through standard Windows drivers.

New SmartWorks Pro SCAN & COPY software is an optional professional extra. Includes thresholding for image restoration and printer drivers for quality color copying.



SmartWorks EZ software -
Everything you need!

Specifications

	Ci 40m mono/grayscale	Ci 40c +Color	Ci 40e +Express Color
Upgradeable	To Ci 40c or Ci 40e	To Ci 40e	N/A
Optical Resolution	600dpi	600dpi	600dpi
Interpolated Resolution	9600dpi	9600dpi	9600dpi
Max Scan Width	40" (101.6cm)	40" (101.6cm)	40" (101.6cm)
Max Media Width	41" (104.1)	41" (104.1cm)	41" (104.1cm)
Max Media Thickness	0.012" (0.3mm/280gsm)	0.012" (0.3mm/280gsm)	0.012" (0.3mm/280gsm)
Accuracy	+/-0.1% +/-1 pixel	+/-0.1% +/-1 pixel	+/-0.1% +/-1 pixel
Data Capture (color/grayscale)	16-bit	48-bit/16-bit	48-bit/16-bit
Color Space	N/A	RAW RGB/sRGB	RAW RGB/sRGB
Scan Speed 1-bit mono (in/sec) @200dpi	10.00	10.00	10.00
Scan speed 24-bit color (in/sec) @200dpi	N/A	1.67	3.33
Paper Path	Face-up, front entry, front exit		
Interface	High Speed USB 2.0/Windows Image Acquisition (WIA)/Still Image Interface (STI)		
Power Requirements	External power supply 100-250 VAC autosensing +/-10%, 50-60Hz Less than 40VA (scanning) / 4.2VA (standby)		
Weight & Dimensions (WxHxD)	49lbs (22kg) 48.5 x 8 x 10.6" (123.2 x 20.1 x 27cm)		
Host Platform	Windows XP, Windows Vista -32-bit and 64-bit architectures, Win 7		
Certifications	CB, CE, FCC, UL, RoHS. ENERGY STAR®		
Included Software	SmartWorks EZ SCAN/COPY/EMAIL software - supports TIFF, JPEG, PNG & PDF; WIA/STI interface.		
OPTIONAL Software	SmartWorks Pro SCAN & COPY software - industry leading, professional scanning and color-copying software.		

¹CIS (contact image sensor). ²Unlike fluorescent tubes, LEDs only come on when scanning. They have an estimated working-life of 50,000 hours or 6 years scanning 24/7.

[For full details of host system requirements please go to: http://www.colortrac.com/support/system_requirements.htm.] Colortrac Ltd makes no warranty of any kind with respect to the information contained in this document and reserves the right to change specifications without notice. Colortrac and Smart LF® are trademarks of Colortrac Ltd. All other trademarks are the property of their respective owners. Copyright © 2010 Colortrac Ltd. COLORTRAC SMARTLF WIDE FORMAT SCANNERS ARE DESIGNED AND MANUFACTURED BY COLORTRAC.

YOUR COLORTRAC STOCKIST

Colortrac Limited

Colortrac HQ and Factory
 3-5 Brunel Court, Burrell Road,
 St Ives, Cambs PE27 3LW, UK
 Tel: +44 1480 464618
 Fax: +44 1480 464620

Colortrac Inc.

4431-A Brookfield Corporate Drive
 Chantilly, Virginia 20151, USA
 Tel: +1 703 717 5631
 Fax: +1 703 717 5361

Colortrac Japan

12th floor, 1203
 Yokohama creation square,
 5-1 Sakae-Cho
 Kanagawa-Ku, Yokohama-Shi
 Kanagawa-Ken
 221-0052 Japan
 Tel: +81(0)45 548 6991
 Fax: +81(0)45 548 6992

Colortrac Limited (Beijing)

Room 1208, ZhongGuanCun Technology Development
 Building C, No.34 Zhong Guan Cun South Street
 HaiDian District, Beijing 100081, P.R. China
 Tel: +86 (0) 10 62124936
 Fax: +86 (0) 10 62124770

www.colortrac.com